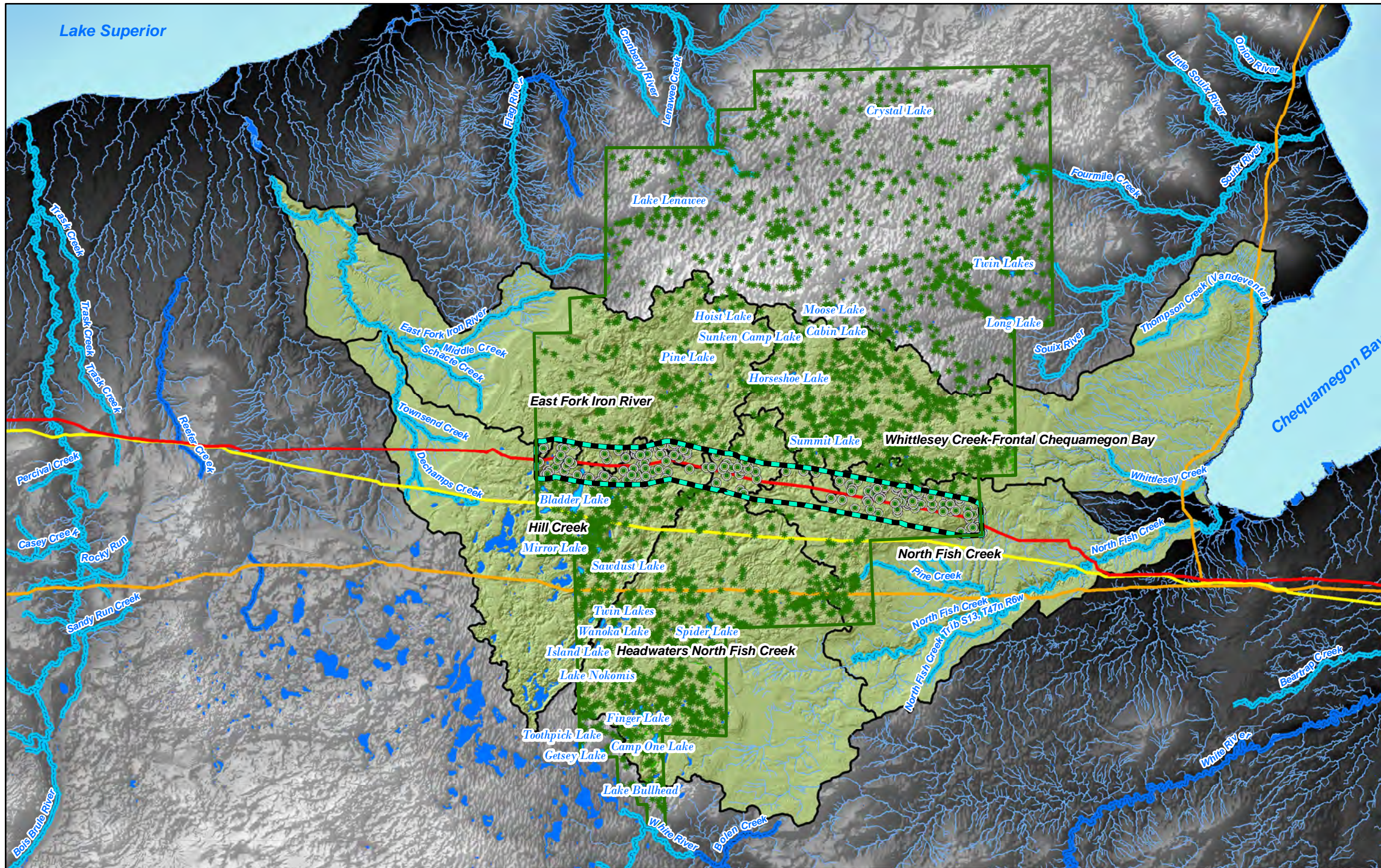


# Treaty & Cultural Resources for the Seventh Generation

## Chequamegon-Nicolet National Forest

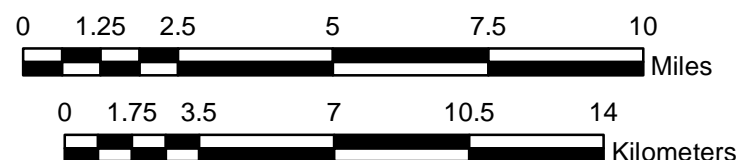
### Map C. Nibi Water Resources



**Wetlands & Lakes**  
 There are five major wetland types mapped in the vicinity of Enbridge's Line 5 right-of-way through the CNNF. Five deepwater lakes, including the Bladder Lake and the Barksdale Ponds State Natural Area, are within close range of Line 5. Bladder Lake is a traditional ogaa (walleye) fishery, but does not currently support a large enough population for sustenance. Combined, these lakes cover about eleven acres, but are surrounded by and support other rare and endemic ecosystems. Associated communities include: emergent, submergent, and shoreline communities, maturing red and white pine forest, and kettle bogs. At least eight emergent/wet meadows are present nearby the pipeline corridor, and cover an estimate of 18.5-acres. Every wetland community supports rare medicine plants that are only found in these sensitive and scattered habitats. Changes in hydrological and biological profile of water resources can prevent them from supporting valuable ecosystem services.

**Headwaters**  
 The drainage basins of five tributaries of three major streams that ultimately drain into Lake Superior are crossed by Enbridge Line 5 in the CNNF. Hill Creek and the East Fork Iron River drain into the Iron River, a Class I trout stream. North Fish Creek and Headwaters North Fish Creek drain into Fish Creek, another Class I trout stream. And Whittlesey Creek is another Class I trout stream with its headwaters in the pipeline corridor. These rivers support several species of trout and salmon. A thorough examination and understanding of the potential for the pipeline and associated activities to damage these sacred waterways and the great Gichigami itself, is essential to protecting the resource for the next seven generations.

Reference Scale 1:195,000  
 Datum & Projection  
 NAD 1983 UTM Zone 15N



	HUC12 Subwatersheds		<b>Small Wetlands (WWI 2012)</b>
	Open Water		<b>Within 2500-ft of Pipeline</b>
	<b>Wisconsin High Quality Waters</b>		
	Exceptional Resource Water		
	Outstanding Resource Water		
	<b>Wetlands</b>		
	Emergent Wetlands		
	Scrub/Shrub Wetlands		
	Forested Wetlands		
	Open Water Wetlands		<b>Operator</b>
			Enbridge
			Northern Natural Gas
			Transcanada
			1/2-mile Ecological Impact Area

